



# GREENBROZ

## M1 DRY TRIMMER

### User Manual

# WARNING

This machine contains moving parts, Do not attempt to touch the top or bottom blades while the machine is in operation, Long hair or loose clothing can get caught in the moving parts. Ensure that any loose hanging jewelry, long hair or clothing is away from the machine, Do not operate the machine while impaired, Ensure the machine is unplugged prior to any disassembly.

**FAILURE TO COMPLY WITH THE ABOVE MAY RESULT IN SERIOUS INJURY.**

## Dimensions

Height 51 inches / 129.54 CM

Width 32 inches / 81.28 CM

Length 29 inches / 73.66 CM

Weight 120 Lbs / 55 KG

## Speed

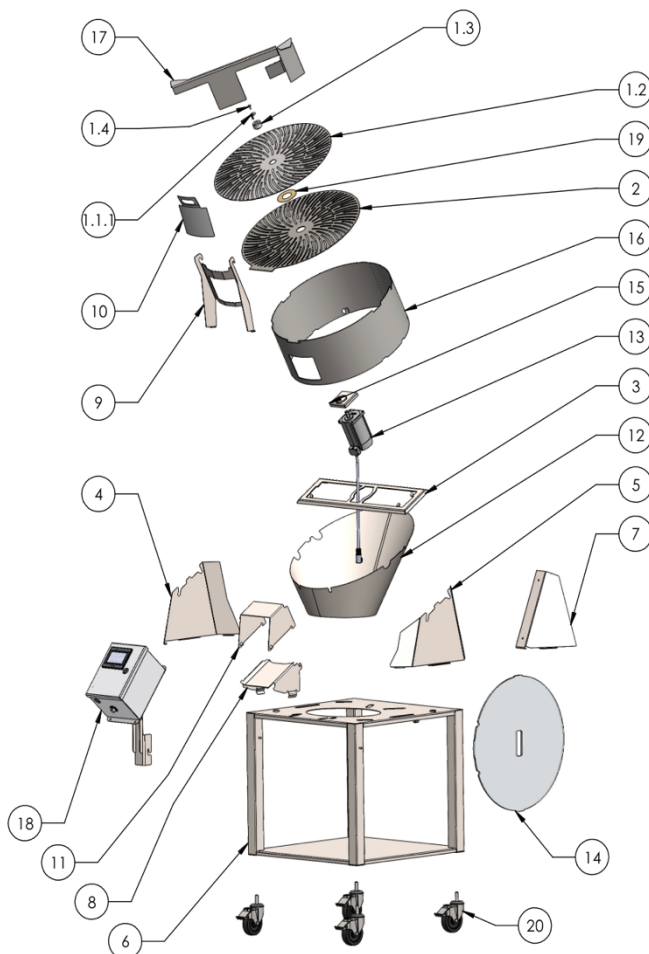
Variable Speed 0-20 RPMv

## Power US / EU

Amperage: 1.3 Amps / 1.5 Amp

Voltage: 110 V / 230 Single

Hertz: 60Hz / 50 Hz



Part Number	Part Name
1.1.1	Hub Key
1.2	Top Blade
1.3	Center Hub
1.4	Hub Screw
2	Bottom Blade
3	Motor Mount
4	Left Side Panel
5	Right Side Panel
6	M1 Cart
7	Trim Catch Brace
8	Chute Ramp
9	Door Frame
10	Door
11	Chute Cover
12	Trim Catch
13	Motor
14	Lid
15	Motor Cover
16	Barrel
17	Center Fin
18	Control Box
19	Teflon Ring
20	Cart Caster

# SETUP

There are a few things to do prior to using your machine for the first time. All parts noted in this manual will be included with your machine, unless otherwise noted.

Prior to your first use, you'll need to gather the following materials:

- Food safe Lubrication.
- Isopropyl alcohol
- Box cutter or razor blade
- Microfiber Cloth

## **Unpacking the machine**

1. Remove the machine from the shipping container by unscrewing the cart brackets and remove all the plastic and tape.
2. Follow the assembly instruction.
3. Plug in the control cable into appropriate port.
4. Plug machine into power outlet.
5. Using a microfiber cloth, wipe down the trimming area with isopropyl alcohol.

## **Turning Machine On**

1. Release E-Stop.
2. Plug machine into power.
3. Wait for HMI to power on and display splash screen.
4. Touch anywhere to start.

# OPERATION

Review all the disclosures and following all the instructions to ensure safety and optimal processing. Prior to use, ensure that the machine placement is correct.

## Follow the GreenBroz, Inc. Flower Preparation Guidelines.

### Basic Machine Operation

1. Remove the lid and place the material to be processed into the cutting chamber.
2. Replace the lid.
3. Plug machine into electric outlet.
4. Release E stop.
5. Tap screen.
6. Tap 'start trimming'.
7. Use slider to select desired speed.
8. Select forward.
9. Press start.
10. You may use the count method by simply pressing start, or you can input a desired time and press start.

### Removing Jams

1. Occasionally check for any stems caught between the blades. If stems are caught, tap REVERSE and wait for 2/3 of a rotation in order to release material, then tap FORWARD.

### Shutdown Procedure

1. Stop trimming.
2. Wait for blade speed to reduce to zero.
3. Engage E-Stop.
4. Unplug trimmer.

# CLEANING

## Follow the GreenBroz, Inc. Cleaning Guidelines.

### Cleaning Procedure

1. Follow the shutdown procedure.
2. Disassemble the equipment for easier cleaning.
3. Follow the GreenBroz Cleaning Guide.

# TROUBLE SHOOTING

### ISSUE: Trimmer won't start:

- Make sure E stop is released.

### ISSUE: Hard to insert or remove top blade:

- If there is tension between the motor shaft & "hub key", rotate the blade in the opposite direction, about half turn, to release the pressure.
- Make sure the hub & blade are aligned as loose hardware can prevent the hub and top blade from aligning with the motor shaft.

### ISSUE: Top blade vibrates or chatters when rotating:

- Resin build up can cause vibrating/chattering of the blade as well. If it seems to be the case, clean blades per the protocol provided.
- Check for stems in blades.
- Check for loose hub screw.

### ISSUE: HMI is black:

- Ensure control box is fully connected.
- Ensure E-Stop is released.
- Ensure machine is plugged into power.

# WARRANTY

REGISTER YOUR PRODUCT WITHING 30 DAYS OF DELIEVERY TO ACTIVATE YOUR WARRANTY.

<https://www.greenbroz.com/product-registration/>

UNLESS SUBPOENAED, ALL INFORMATION OBTAINED BY GREENBROZ INC. WILL BE KEPT PRIVATE AND SECURE. GREENBROZ INC. WILL NOT SHARE OR DISTRIBUTE YOUR INFORMATION WITHOUT CONSENT.

## LIMITED WARRANTY

Products covered: This limited warranty is limited to GreenBroz, Inc. Dry Trimmer products manufactured by

GreenBroz, Inc. (the "products") and provides that such product is free from defects in material and workmanship.

Length of warranty: The length of this warranty shall be 36 months from the product receipt.

To Qualify for this warranty: The product must be purchased from GreenBroz Inc., or a dealer authorized by GreenBroz, Inc., to sell the products. This warranty only applies to the first retail purchaser and is not transferable to subsequent owners.

What GreenBroz will repair or replace under warranty: GreenBroz Inc. will repair or replace, at its option, any part that is proved to be defective in material or workmanship under normal use during the applicable warranty period. Warranty repairs and replacements will be made without charge for parts or labor. Anything replaced under warranty becomes the property of GreenBroz, Inc. All parts replaced under warranty will be considered as part of the original product and any warranty on those parts will expire coincidently with the original product warranty. To obtain Warranty Service: Contact GreenBroz, Inc. for a return authorization and instructions for warranty.

Exclusions: 1. Any damage or deterioration resulting from neglect of periodic maintenance as specified in any product owner's manual or any improper repair or maintenance; 2. Neglect, unauthorized alteration, modifications, misuse, incorporation of use of unsuitable attachments or parts ; 3. Damage caused by salt water, corrosion, rust, varnish, abrasives, and moisture; or 4. Any product that has ever been declared a total loss or sold for salvage by a financial institution or insurer.

Disclaimer of Consequential Damage and Limitations of Implied Warranties: This limited warranty is in lieu of all other expressed or implied warranties, including any warranty of FITNESS FOR A PARTICULAR PURPOSE OR USE and any implied warranty of MERCHANTABILITY otherwise applicable to this product. GreenBroz, Inc. disclaims any responsibility for loss of time or use of the product, transportation, commercial loss, or any other incidental or consequential damage, including lost profits. There are no warranties extended other than as provided herein. This limited warranty may be modified only by GreenBroz, I

